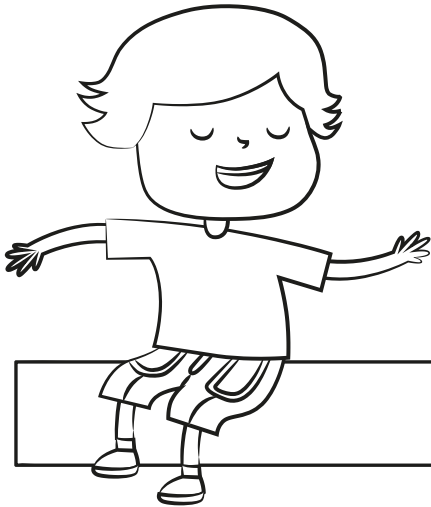


THE NAME IS OUR IDENTITY.
O NOME É NOSSA IDENTIDADE.

WHAT IS YOUR NAME?
QUAL É O SEU NOME?



MY NAME IS...
MEU NOME É...

PESSOAL

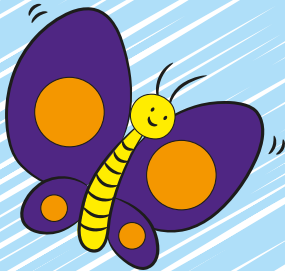
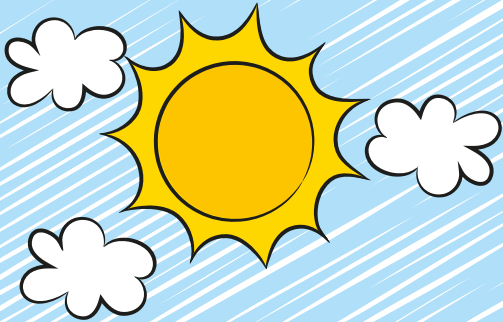
CAN YOU REPEAT, PLEASE?
VOCÊ PODE REPETIR, POR FAVOR?

PESSOAL

THERE ARE  **LETTERS IN MY NAME.**
HÁ LETRAS NO MEU NOME.

LET'S COLOR THE GARDEN WITH THE INDICATED COLORS.

VAMOS PINTAR O JARDIM COM AS CORES INDICADAS.



1- GREEN FOR LEAVES, GRASS AND FLOWERS STEMS.

VERDE PARA FOLHAS, GRAMA E CAULES DAS FLORES.

2- BLUE FOR THE SKY.

AZUL PARA O CÉU.

3- RED FOR TWO OF THE FLOWERS.

VERMELHO PARA DUAS FLORES.

4- PINK FOR THREE OF THE FLOWERS.

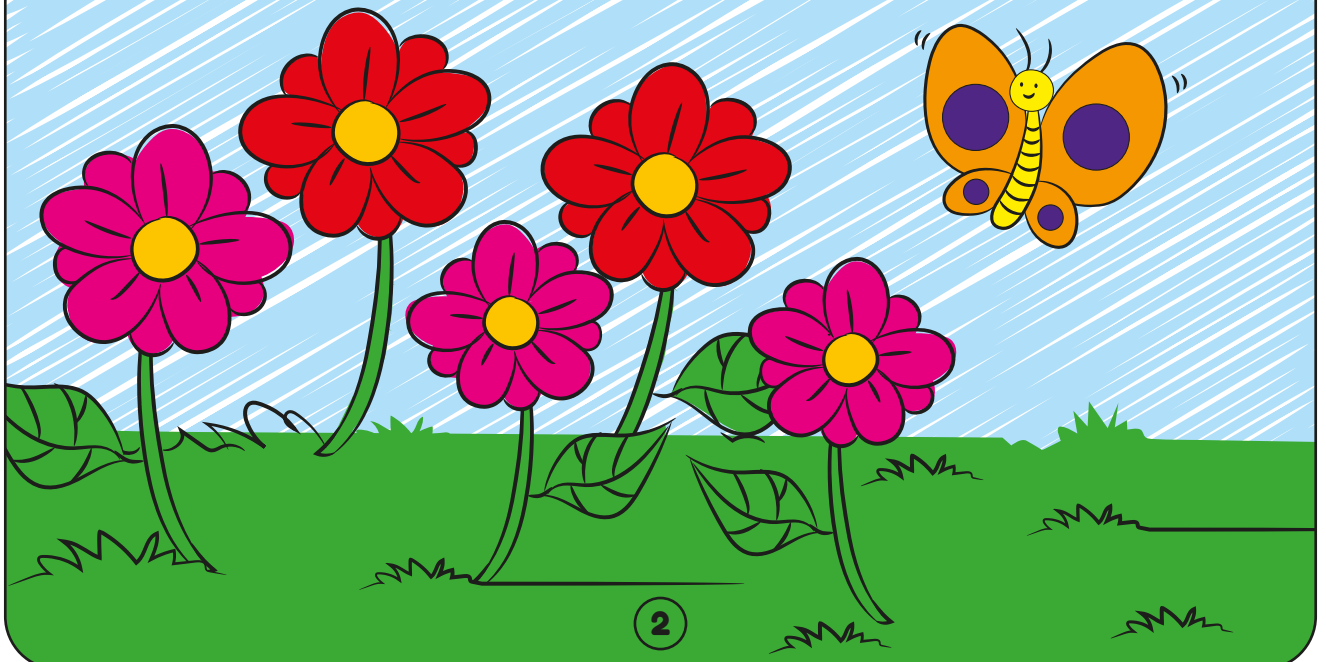
ROSA PARA TRÊS FLORES.

5- YELLOW FOR THE SUN AND THE CENTERS OF THE FLOWERS.

AMARELO PARA O SOL E PARA OS MIOLOS DAS FLORES.

6- PURPLE AND ORANGE FOR THE BUTTERFLIES.

ROXO E LARANJA PARA AS BORBOLETAS.



LET'S LEARN MORE?

NOW, COLOR THE CASTLE WITH THE NEW COLORS.

VAMOS APRENDER MAIS? AGORA, PINTE O CASTELO COM AS NOVAS CORES.

1- **WHITE FOR THE CLOUDS.**
BRANCO PARA AS NUVENS.

2- **BLACK FOR THE WINDOWS.**
PRETO PARA AS JANELAS.

3- **GRAY FOR THE DOOR.**
CINZA PARA A PORTA.

4- **BROWN FOR THE ROOF.**
MARROM PARA O TELHADO.

CHOOSE THE COLORS TO FINISH.
ESCOLHA AS CORES PARA TERMINAR.

5- **YELLOW** FOR THE SUN.
AMARELO PARA O SOL.

6- **GREEN** FOR THE GRASS.
VERDE PARA A GRAMA.

7- **RED** FOR THE FLAGS.
VERMELHO PARA AS BANDEIRAS.

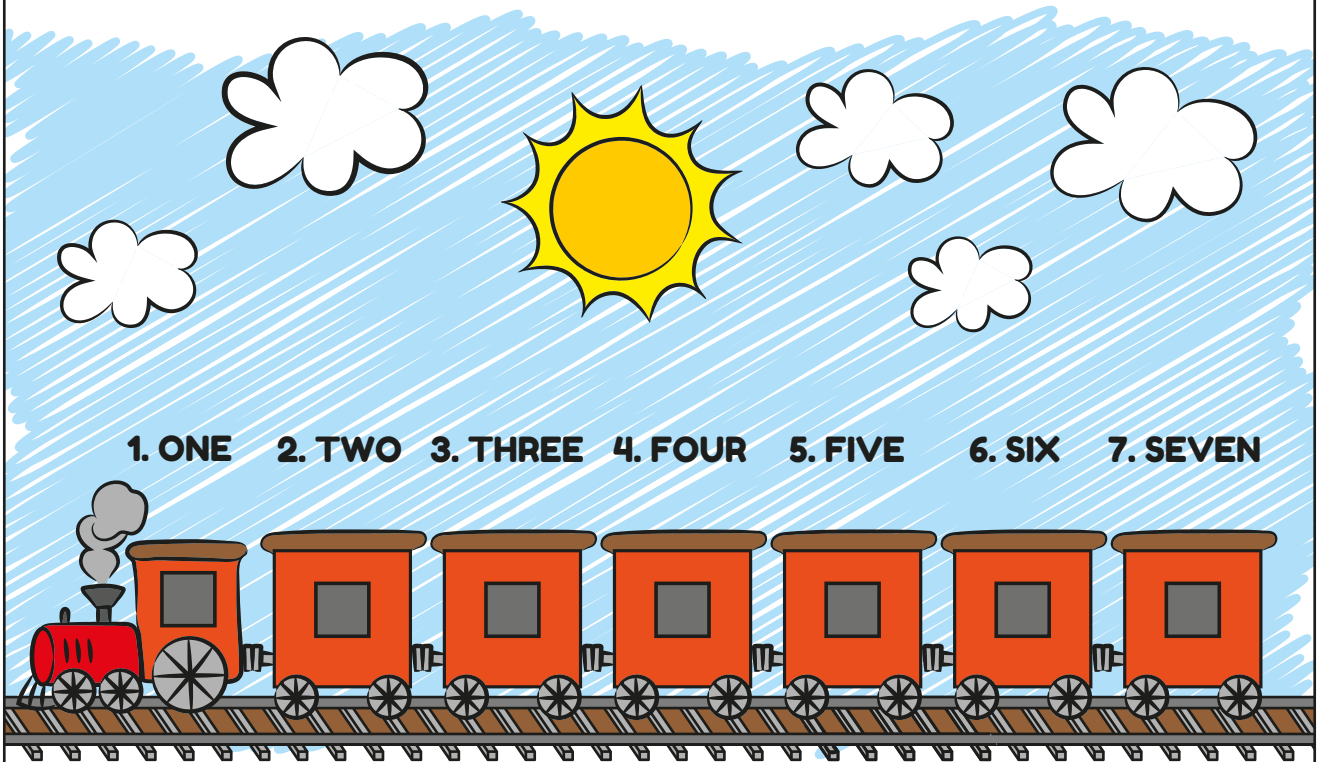
8- **ORANGE** FOR THE CASTLE WALLS.
LARANJA PARA AS PAREDES DO CASTELO.

8- **LARANJA** PARA AS PAREDES DO CASTELO.



LET'S COUNT THE NUMBERS AND COLOR THE TRAIN.

VAMOS CONTAR OS NÚMEROS E COLORIR O TREM.



1. ONE

2. TWO

3. THREE

4. FOUR

5. FIVE

6. SIX

7. SEVEN

NOW, ANSWER:

AGORA, RESPONDA:

**1- HOW MANY WINDOWS ARE THERE
ON THE TRAIN?**

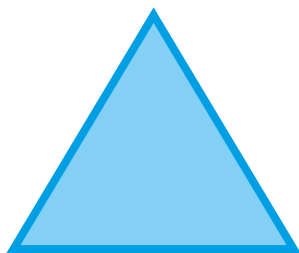
QUANTAS JANELAS HÁ NO TREM?

SEVEN

2- HOW MANY CLOUDS ARE THERE IN THE SKY?
QUANTAS NUVENS HÁ NO CÉU?

FIVE

TRACE AND COLOR THE SHAPES.
CONTORNE E PINTE AS FORMAS GEOMÉTRICAS.



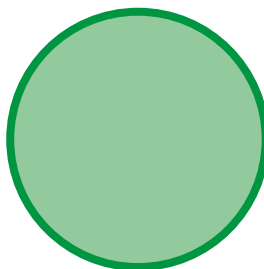
TRIANGLE
TRIÂNGULO



STAR
ESTRELA



RECTANGLE
RETÂNGULO



CIRCLE
CÍRCULO



SQUARE
QUADRADO



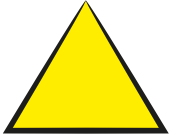
HEART
CORAÇÃO



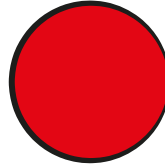
CROSS
CRUZ

COLOR THE ROCKET ACCORDING TO THE INSTRUCTIONS BELOW.

PINTE O FOGUETE DE ACORDO COM AS INSTRUÇÕES ABAIXO.



THE TRIANGLE IS YELLOW.
O TRIÂNGULO É AMARELO.



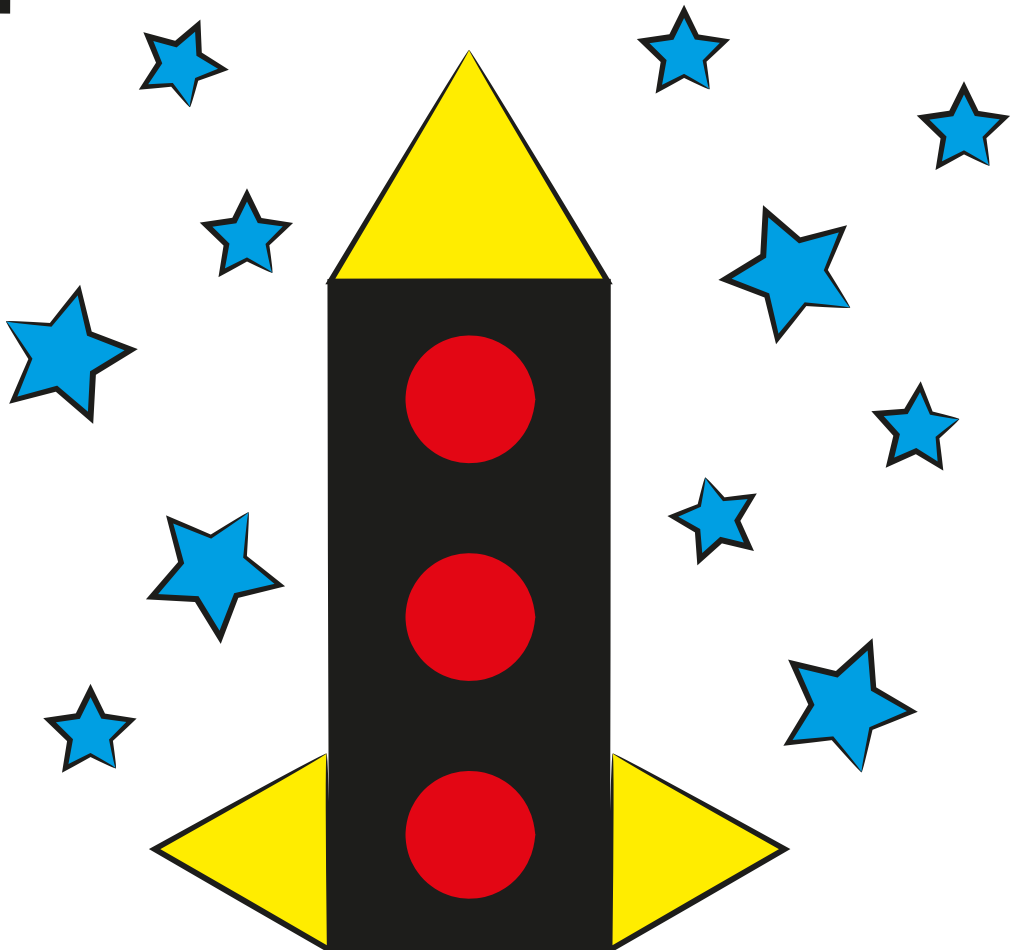
THE CIRCLE IS RED.
O CÍRCULO É VERMELHO.



THE RECTANGLE IS BLACK.
O RETÂNGULO É PRETO.

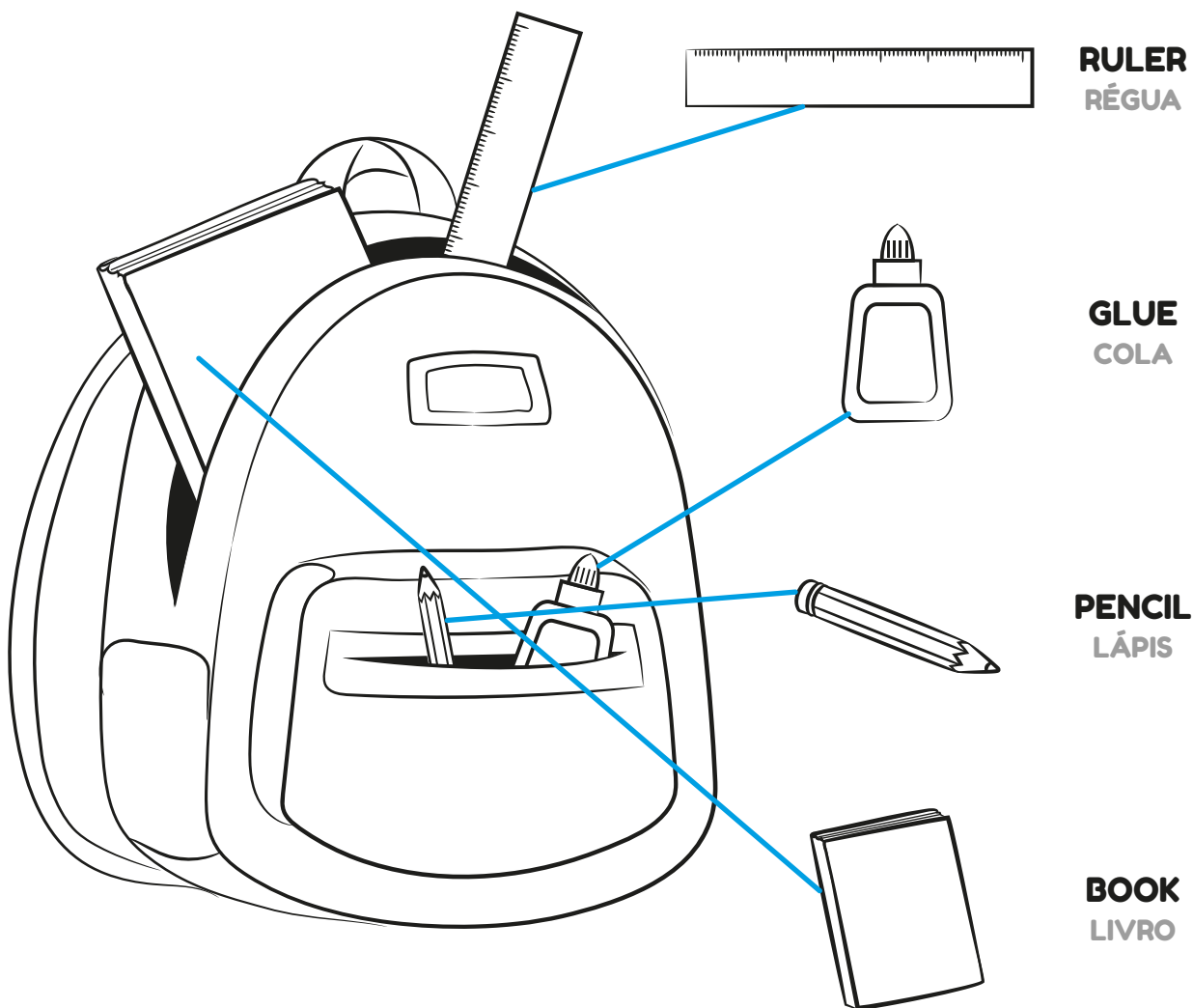


THE STAR IS BLUE.
A ESTRELA É AZUL.



**WHICH SCHOOL MATERIALS ARE INSIDE THE BAG BELOW?
MATCH THE ITEMS.**

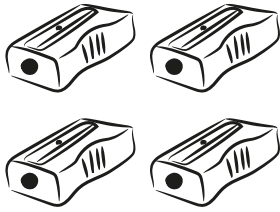
**QUAIS MATERIAIS ESCOLARES TÊM DENTRO DA BOLSA ABAIXO?
LIGUE OS ITENS CORRESPONDENTES.**



LET'S COUNT THE ITEMS AND CIRCLE THE CORRECT NUMBER.

VAMOS CONTAR OS ITENS E CIRCULAR O NÚMERO CORRETO.

PENCIL SHARPENERS
APONTADORES

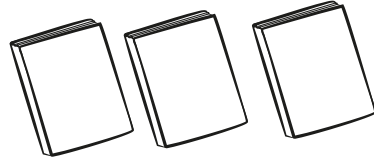


3

1

4

BOOKS
LIVROS

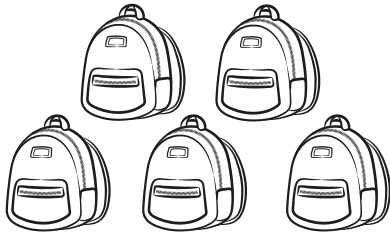


5

3

1

BACKPACKS
MOCHILAS

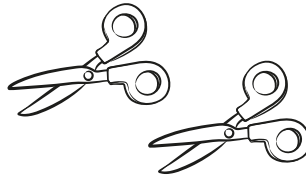


5

4

2

SCISSORS
TESOURAS

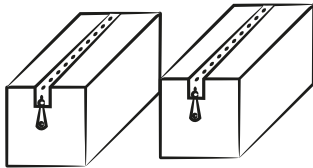


4

2

5

PENCIL CASES
ESTOJOS

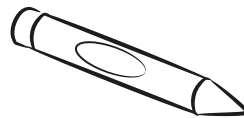


2

4

3

CRAYON
GIZ DE CERA



3

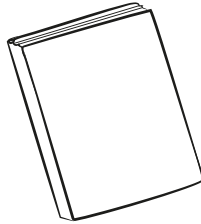
4

1

COLOR ONLY THE TOYS.
PINTE SOMENTE OS BRINQUEDOS.



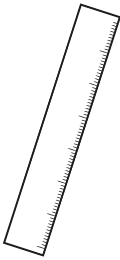
DOLL
BONECA



BOOK
LIVRO



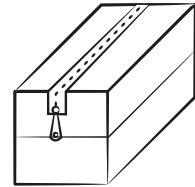
TEDDY BEAR
URSO DE PELÚCIA



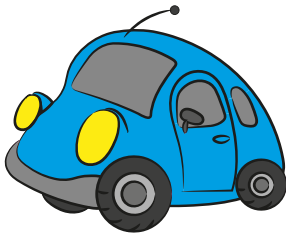
RULER
RÉGUA



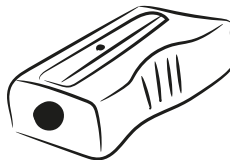
BALL
BOLA



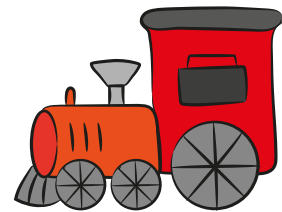
PENCIL CASE
ESTOJO



CAR
CARRINHO

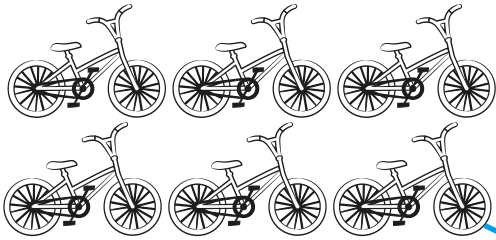


PENCIL SHARPENER
APONTADOR



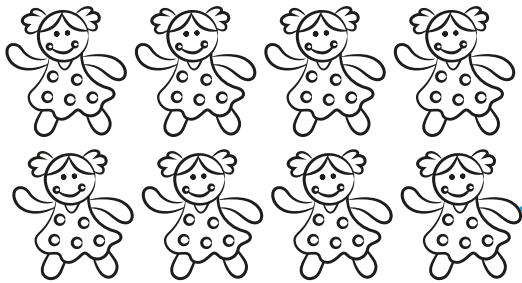
TRAIN
TREM

LET'S COUNT THE TOYS AND CONNECT THE MATCHING ITEMS.
VAMOS CONTAR OS BRINQUEDOS E LIGAR OS NÚMEROS CORRESPONDENTES.



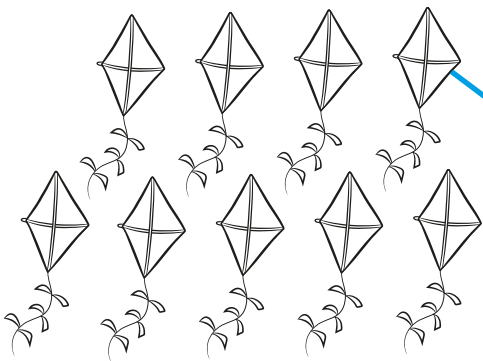
8

EIGHT



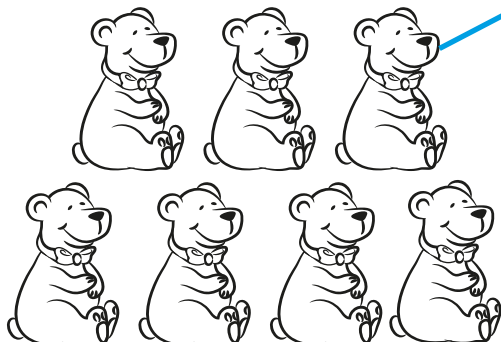
6

SIX



7

SEVEN



9

NINE

READ THE WORDS AND WRITE THE CORRECT NUMBER.

LEIA AS PALAVRAS E ESCREVA O NÚMERO CORRETO.

ONE

SIX

NINE

EIGHT

1

6

9

8

THREE

FIVE

SEVEN

TWO

3

5

7

2

TEN

FOUR

10

4

AFFIX THE STICKERS FROM THE STICKER SHEET TO THE INDICATED AREAS. THEN, COLOR THE DRAWING.

COLE OS ADESIVOS DA FOLHA ADESIVA NAS PARTES INDICADAS. DEPOIS, DEIXE TUDO BEM COLORIDO

ADESIVOS



EYES



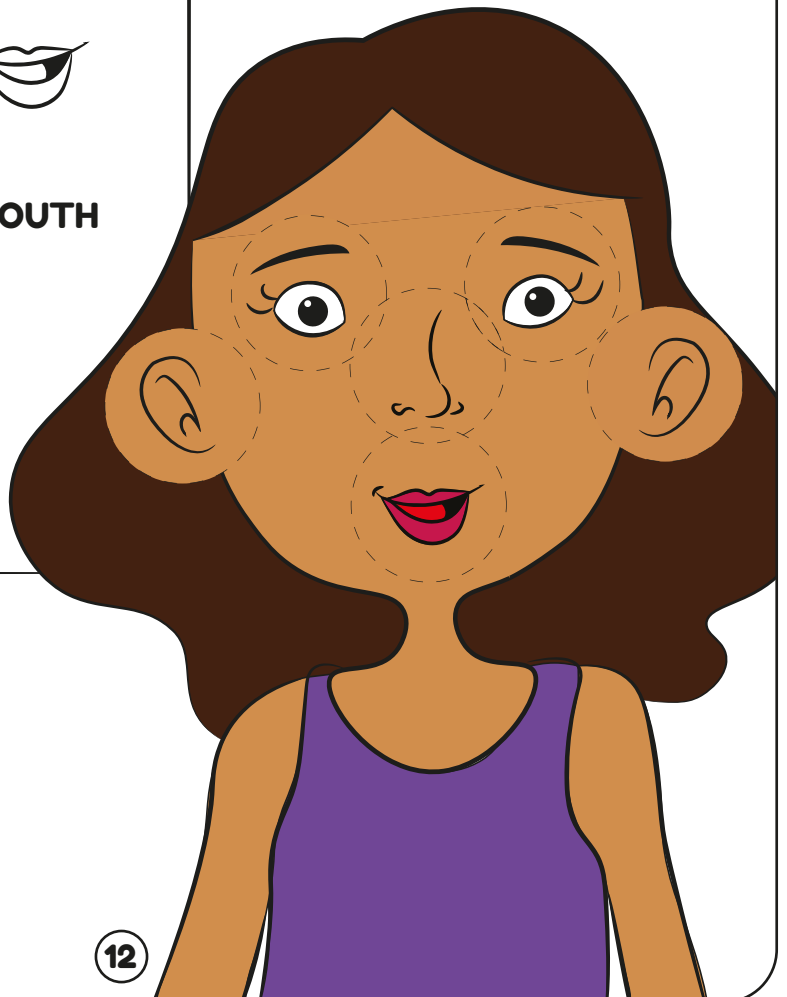
NOSE



MOUTH

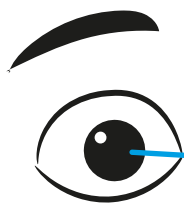


EARS



MATCH THE PARTS OF THE BODY IN THE PICTURE BELOW.

LIGUE AS PARTES DO CORPO HUMANO NA FIGURA ABAIXO.



EYE



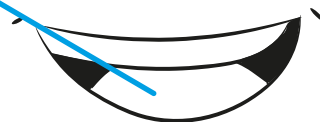
EAR



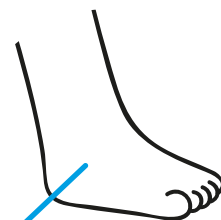
HAND



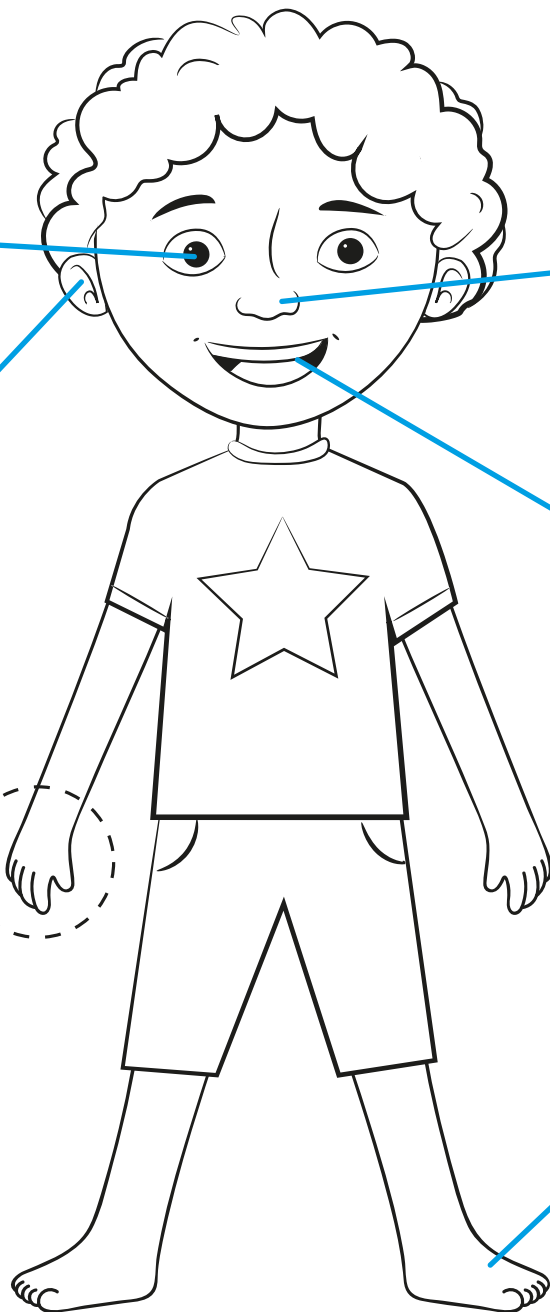
NOSE



MOUTH

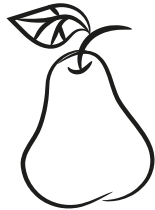


FOOT

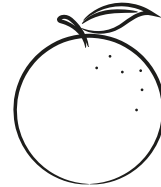


**IT'S TIME FOR A PICNIC! PAINT AND CROSS OUT
YOUR FAVORITE FRUIT.**

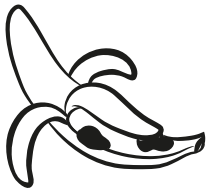
É HORA DO PIQUENIQUE! PINTE E FAÇA UM "X" NA SUA FRUTA PREFERIDA.



PEAR



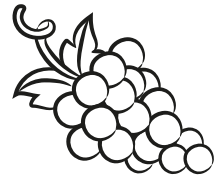
ORANGE



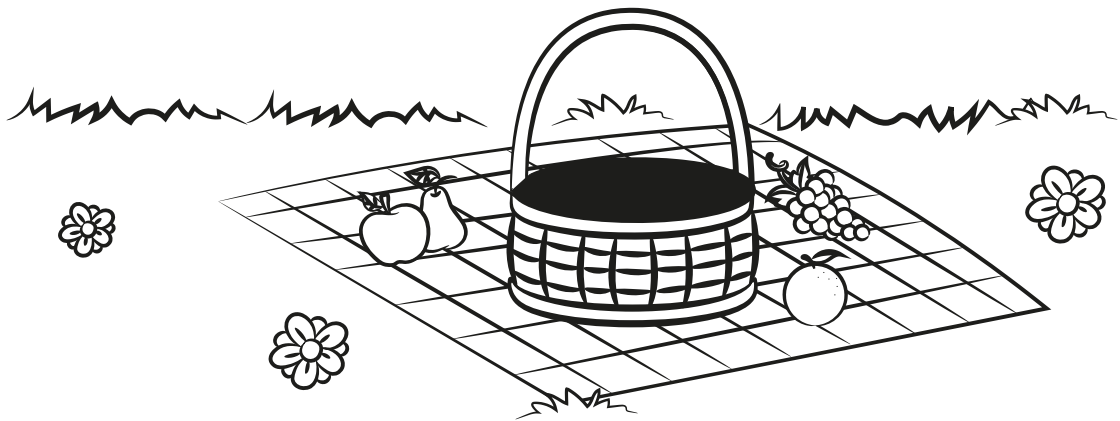
BANANA



APPLE



GRAPES



NOW, COMPLETE:

AGORA, COMPLETE:

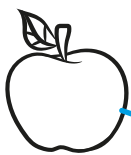
MY FAVORITE FRUIT IS...

PESSOAL

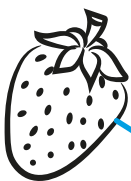
MINHA FRUTA FAVORITA É...

FIND THE CORRECT SHADOW.

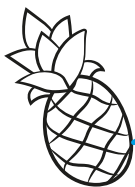
ENCONTRE A SOMBRA CORRETA.



APPLE



STRAWBERRY



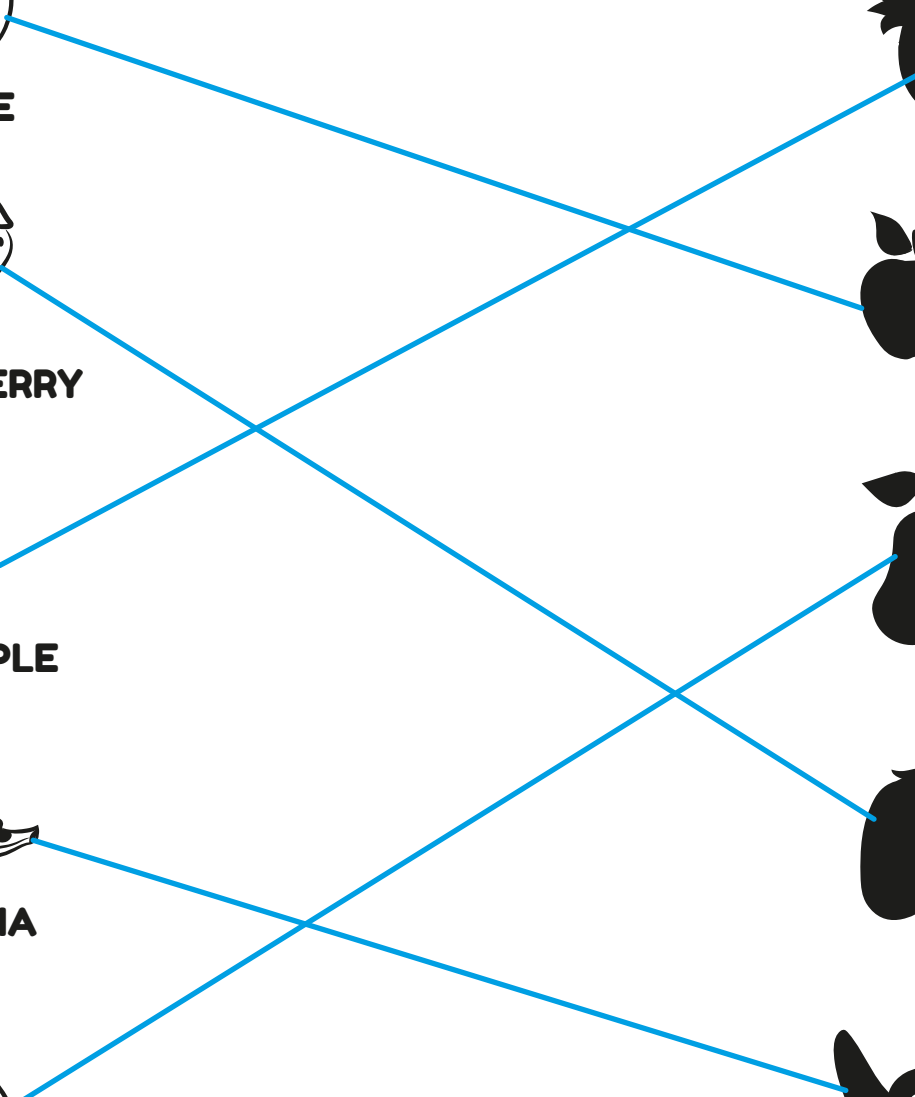
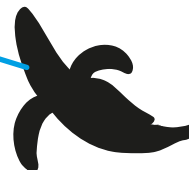
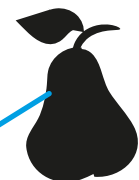
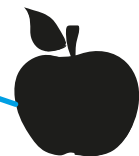
PINEAPPLE



BANANA

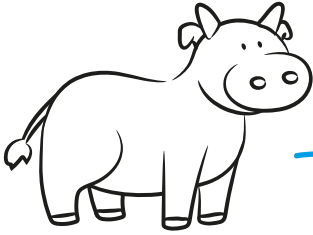


PEAR

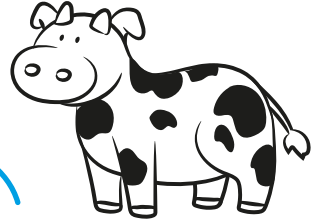


COMPLETE THE LINES AND MATCH THE MALES AND FEMALES.

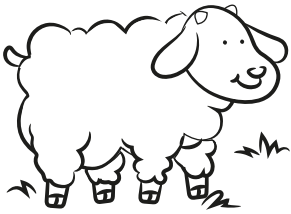
COMPLETE O PONTILHADO E LIGUE OS ANIMAIS
MASCULINOS COM OS FEMININOS.



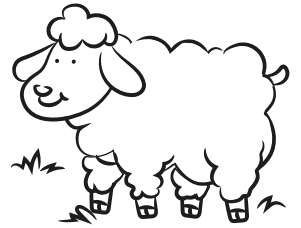
BULL



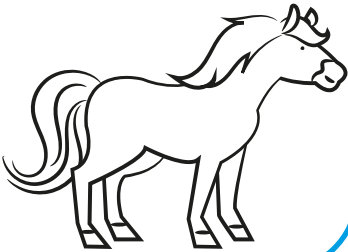
COW



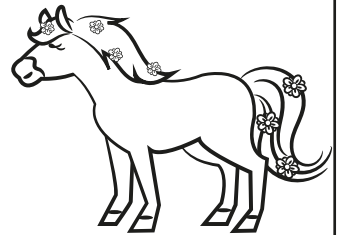
RAM



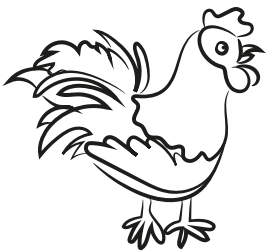
SHEEP



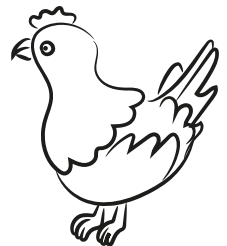
HORSE



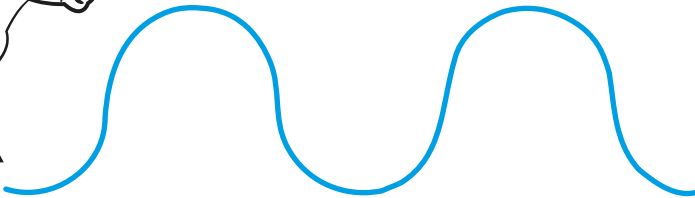
MARE



ROOSTER

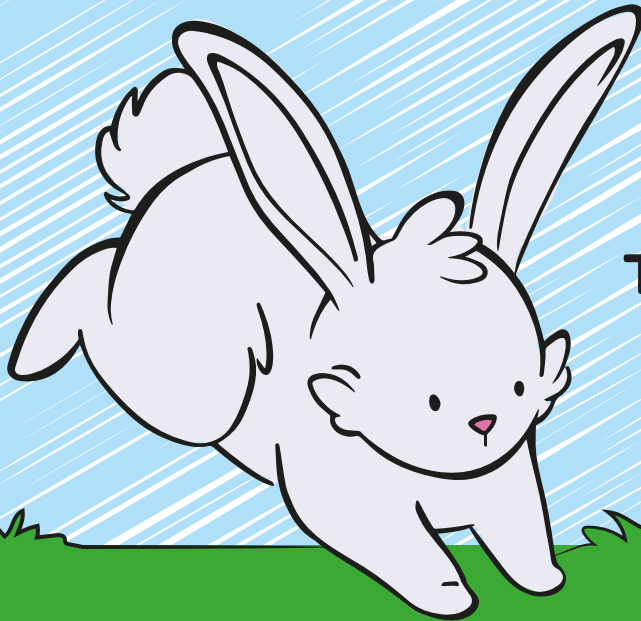


HEN



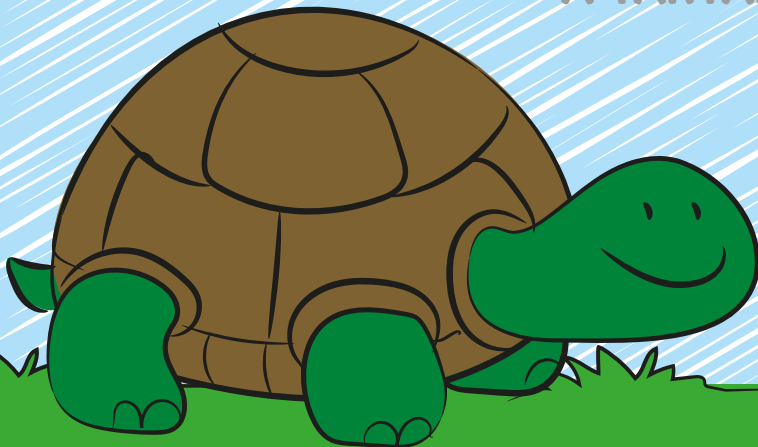
READ AND COLOR!

LEIA E PINTE.

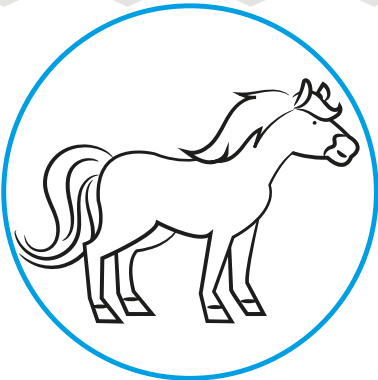


THE RABBIT IS FAST.
O COELHO É RÁPIDO.

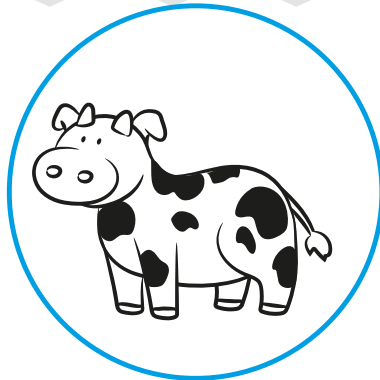
THE TURTLE IS SLOW.
A TARTARUGA É DEVAGAR.



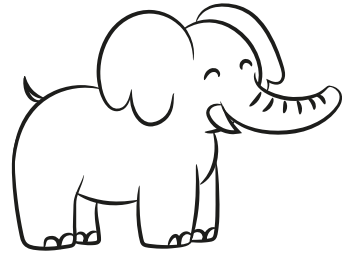
LET'S CIRCLE ONLY THE FARM ANIMALS.
VAMOS CIRCULAR APENAS OS ANIMAIS DA FAZENDA.



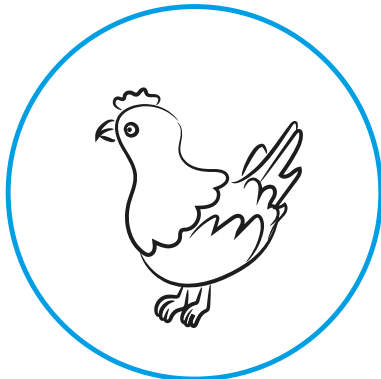
HORSE



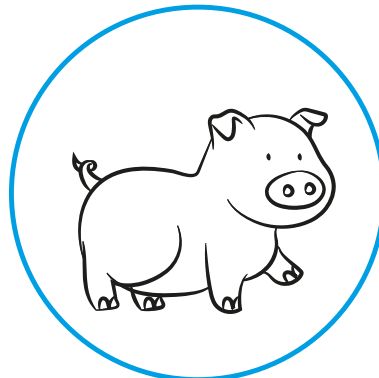
COW



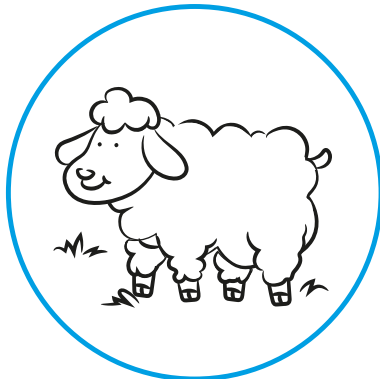
ELEPHANT



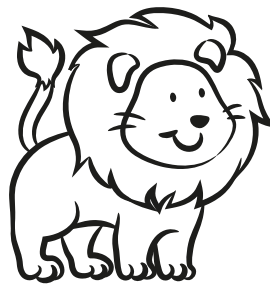
HEN



PIG



SHEEP



LION



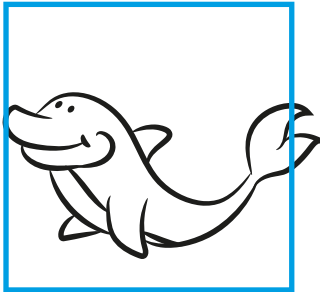
MONKEY

**MAKE A "SQUARE" AROUND THE ANIMALS WHICH LIVE IN THE SEA.
THEN, COLOR YOUR FAVORITE ANIMALS.**

**FAÇA UM QUADRADO NOS ANIMAIS QUE VIVEM NO MAR. DEPOIS,
PINTE OS QUE VOCÊ MAIS GOSTA.**



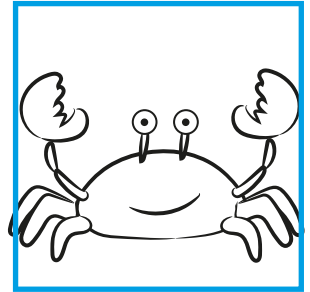
BIRD



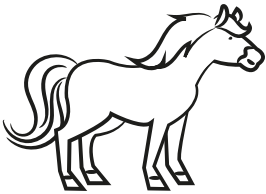
DOLPHIN



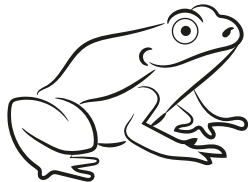
DOG



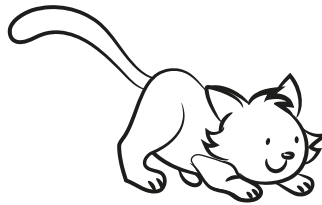
CRAB



HORSE



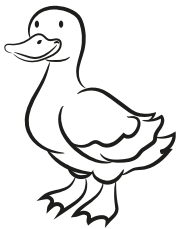
FROG



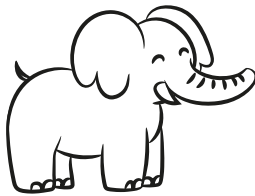
CAT



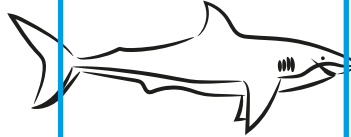
FISH



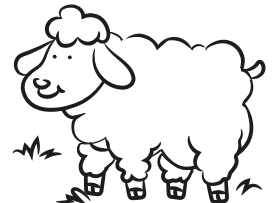
DUCK



ELEPHANT



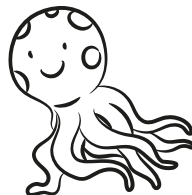
SHARK



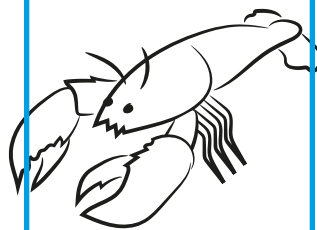
SHEEP



BEAR

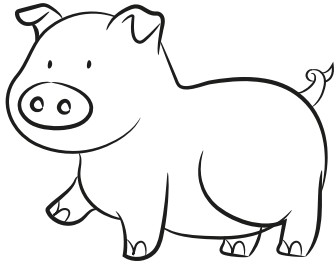


OCTOPUS

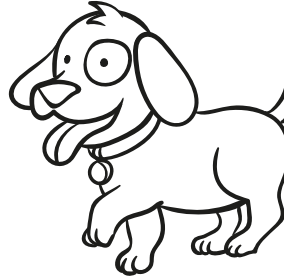


LOBSTER

COMPLETE WITH THE MISSING LETTERS.
COMPLETE COM AS LETRAS PERDIDAS.



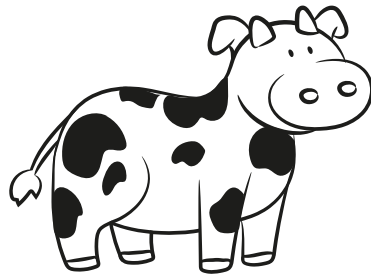
P I G



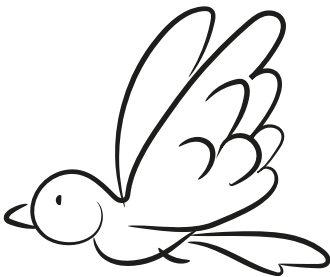
D O G



L I O N



C O W



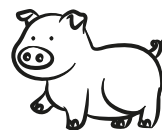
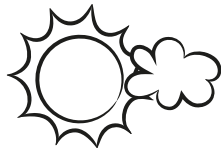
B I R D



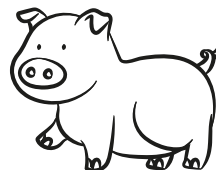
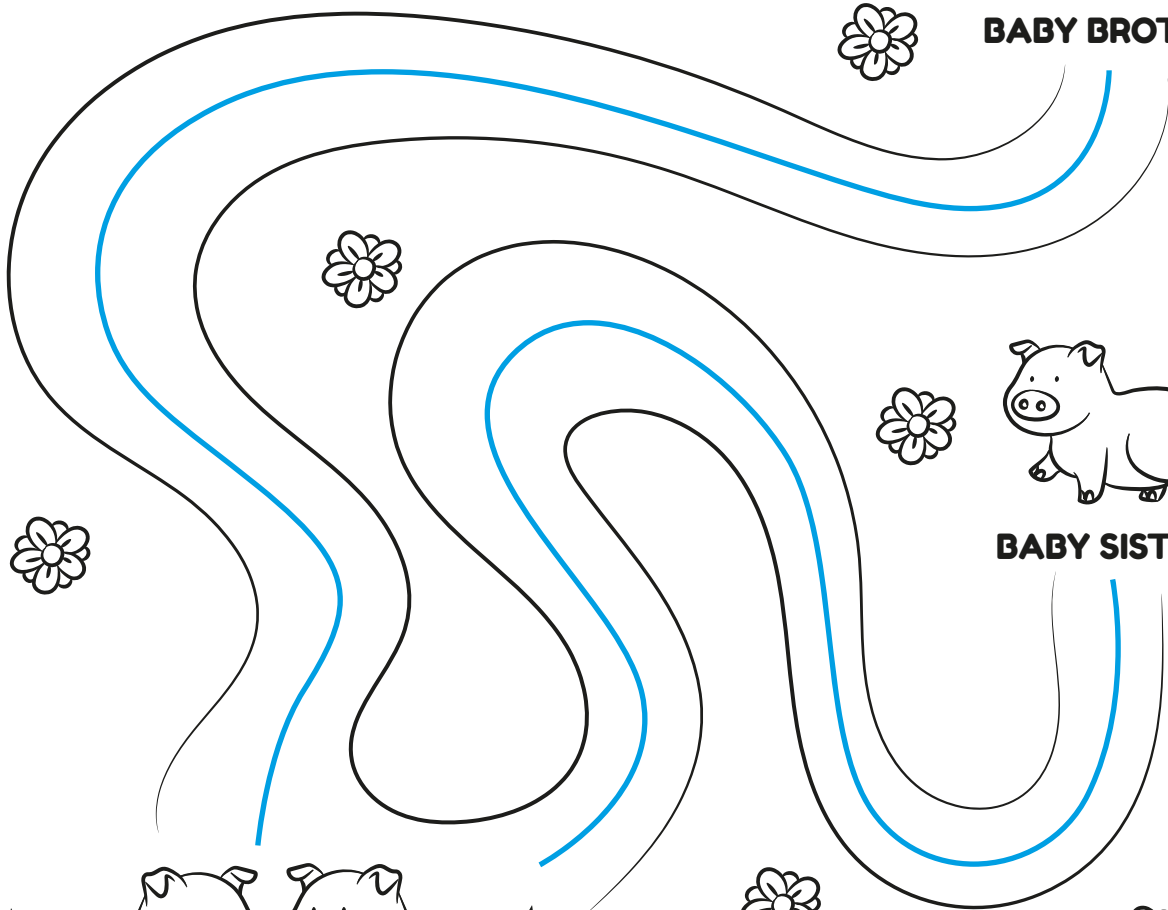
B E A R

HELP THE LITTLE PIGS GET BACK TO THEIR PARENTS.

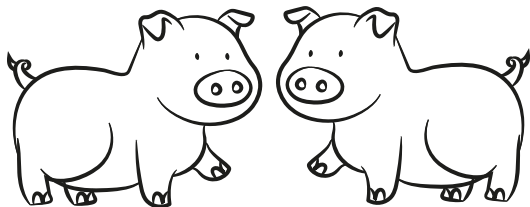
AJUDE OS PORQUINHOS A ENCONTRAREM O CAMINHO PARA OS SEUS PAIS.



BABY BROTHER

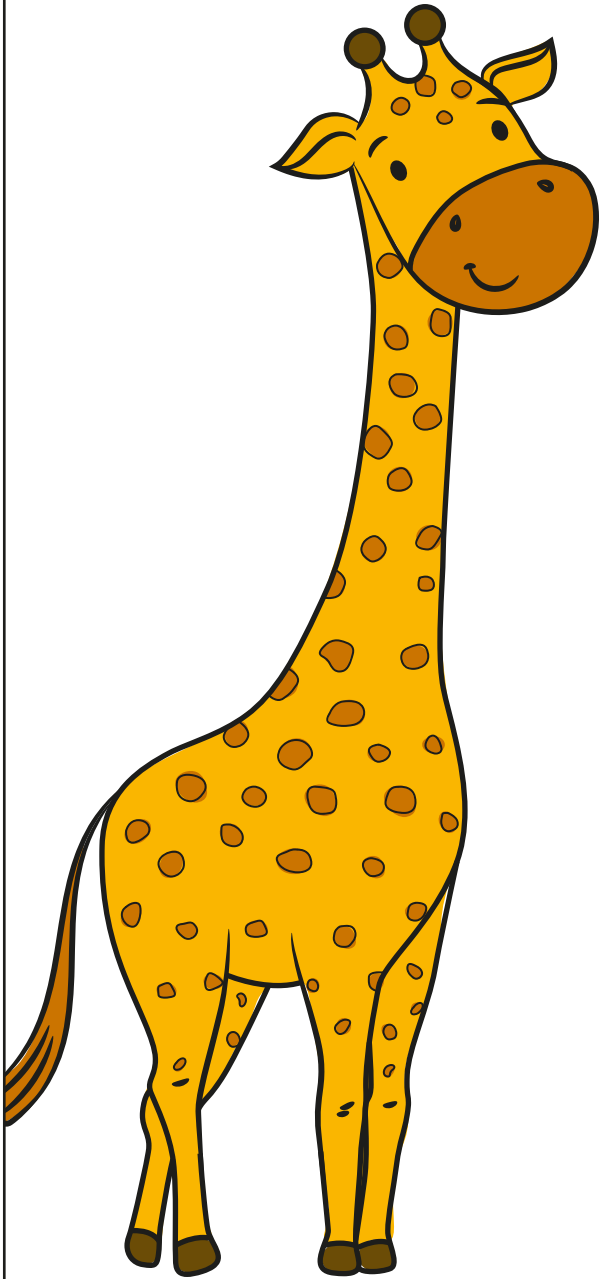


BABY SISTER



PARENTS

LET'S COLOR!
VAMOS COLORIR!



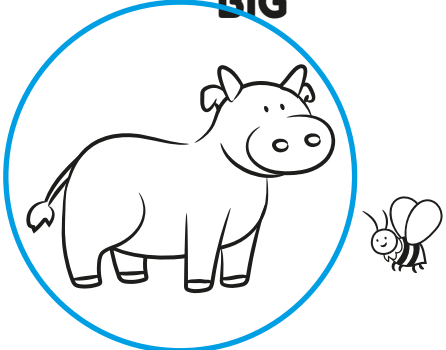
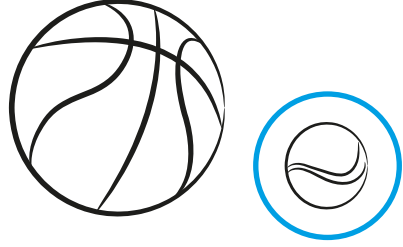


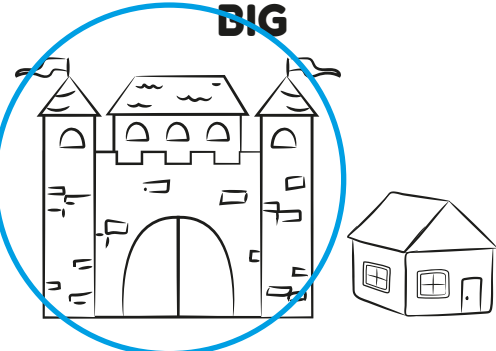
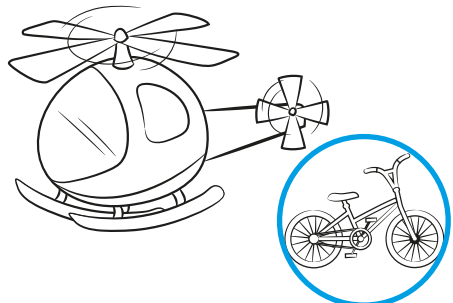
BIG.
GRANDE.



SMALL.
PEQUENO.

NOW, CIRCLE THE CORRECT PICTURE.

AGORA, CIRCULE A FIGURA CORRETA.

<p>BIG</p> 	<p>SMALL</p> 
<p>SMALL</p> 	<p>BIG</p> 
<p>BIG</p> 	<p>SMALL</p> 

NOW IT'S YOUR TURN! DRAW YOUR FAMILY AND ANSWER:
AGORA É A SUA VEZ! DESENHE SUA FAMÍLIA E RESPONDA:



PESSOAL

1- WHAT ARE YOUR PARENTS' NAMES?
QUAIS SÃO OS NOMES DOS SEUS PAIS?

PESSOAL

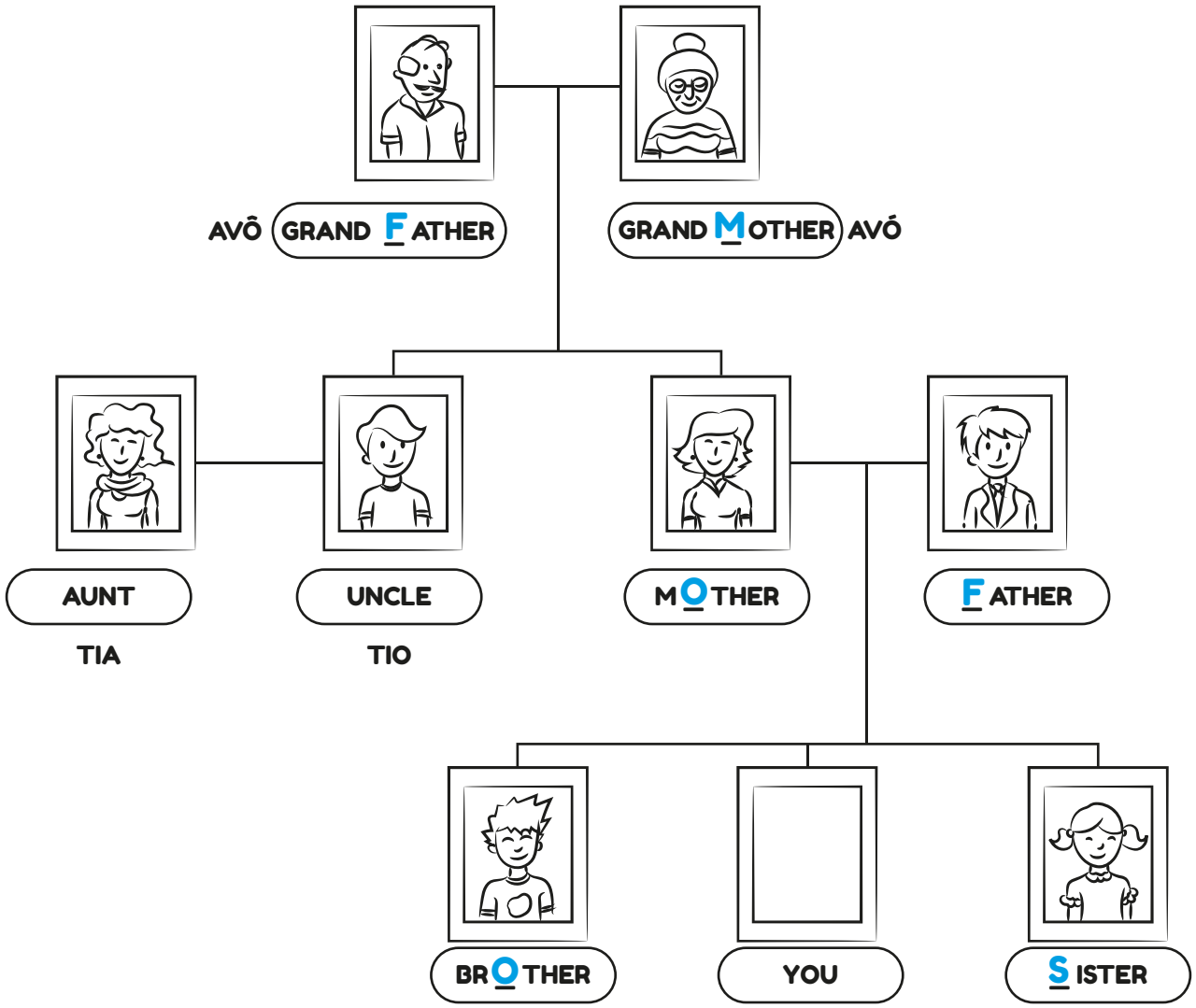
2- WHAT IS YOUR SISTER'S NAME?
QUAL É O NOME DA SUA IRMÃ?

PESSOAL

3- WHAT IS YOUR BROTHER'S NAME?
QUAL É O NOME DO SEU IRMÃO?

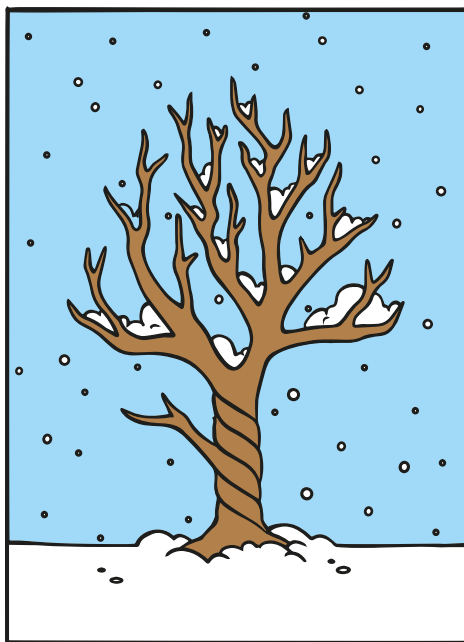
PESSOAL

WRITE THE MISSING LETTERS TO COMPLETE THE WORDS.
ESCREVA AS LETRAS QUE FALTAM PARA COMPLETAR AS PALAVRAS.

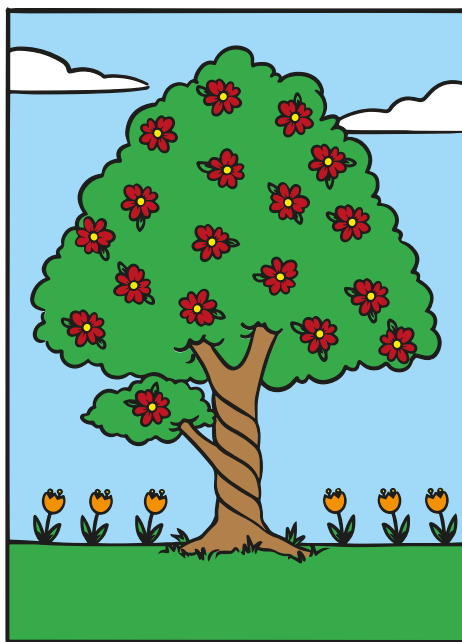


LEARN AND COLOR!

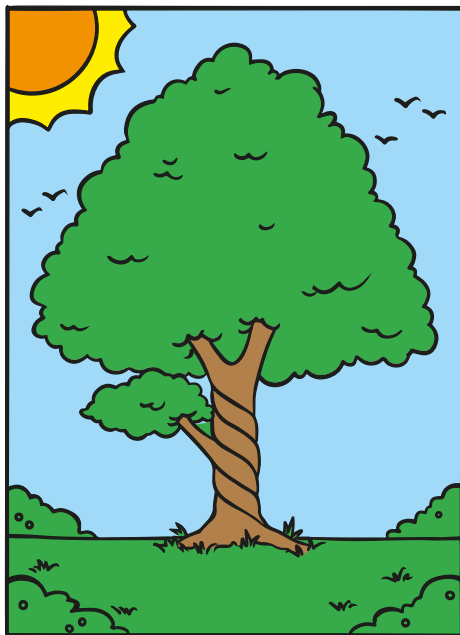
APRENDA E PINTE!



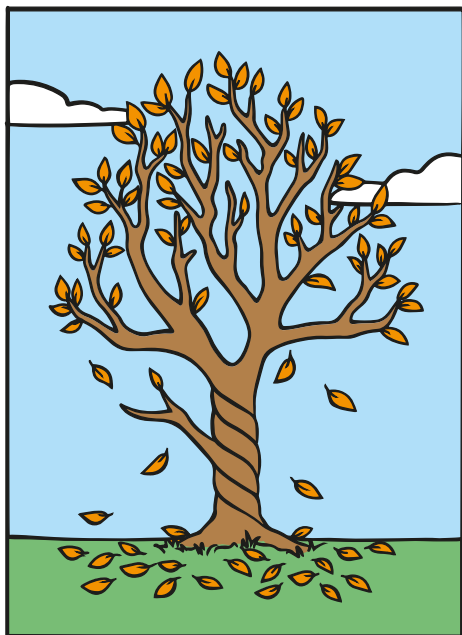
WINTER



SPRING



SUMMER

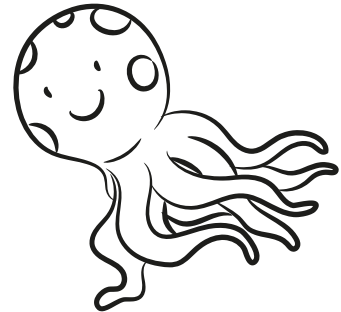
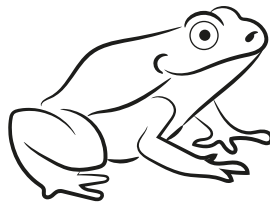
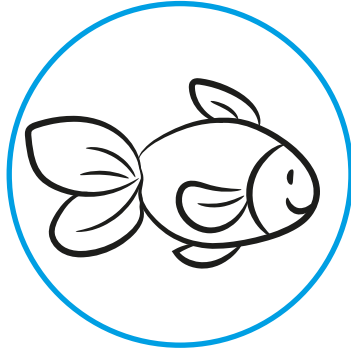


AUTUMN

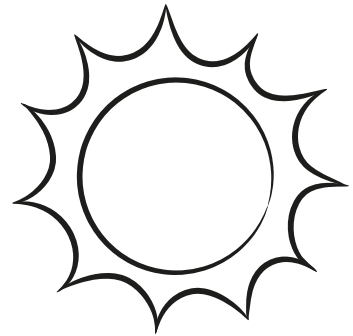
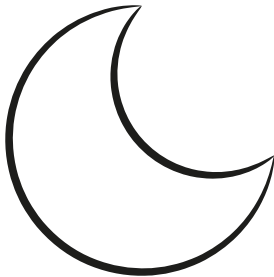
READ THE SENTENCE AND CIRCLE THE CORRECT PICTURE.

LEIA A FRASE E CIRCULE A FIGURA CORRETA.

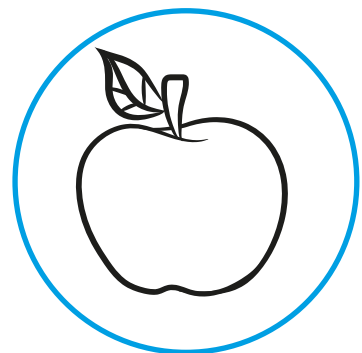
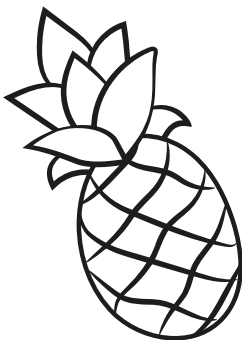
I SEE A FISH.



I SEE A STAR.



I SEE AN APPLE.



FIND THE WORDS BELLOW.
ENCONTRE AS PALAVRAS ABAIXO.

A	F	O	S	M	S	N	O	E	I
N	A	D	C	O	D	I	S	D	M
D	M	E	S	D	A	D	I	H	O
S	I	S	T	E	R	A	S	A	M
O	L	D	M	B	A	B	Y	S	H
N	Y	Q	O	N	E	S	M	A	I
D	D	N	A	I	O	N	S	M	D
T	B	R	O	T	H	E	R	O	S
E	M	O	I	E	I	N	I	S	Q
Y	O	E	O	I	S	Z	S	I	O

DAD

BROTHER

BABY

FAMILY

SISTER

MOM

READ AND COLOR!

LEIA E PINTE.

THE COFFEE IS HOT.

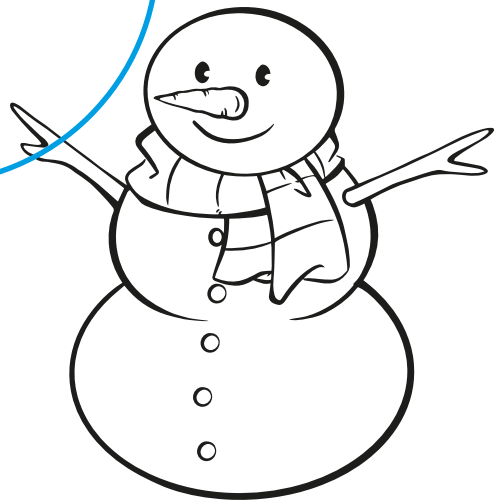
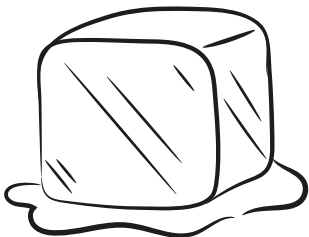
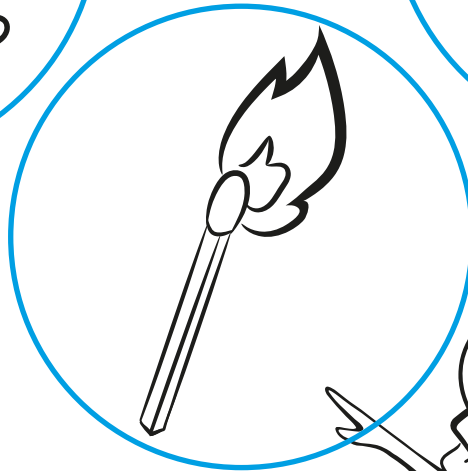
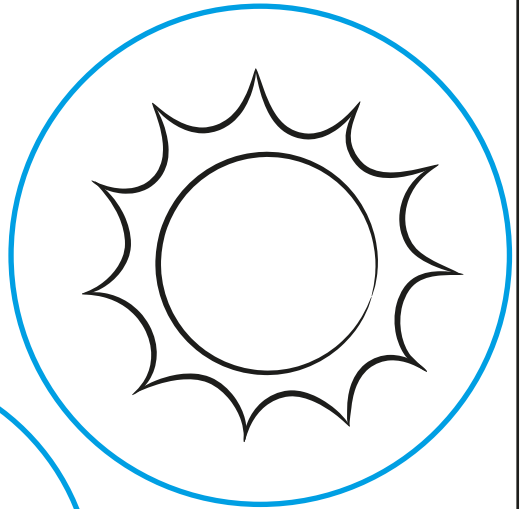
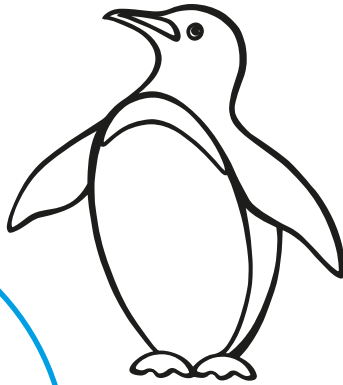
O CAFÉ É QUENTE.



THE ICE CREAM IS COLD.

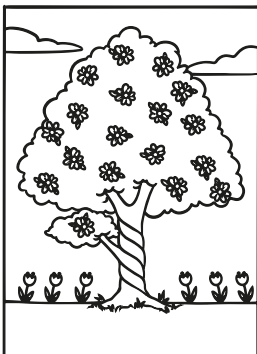
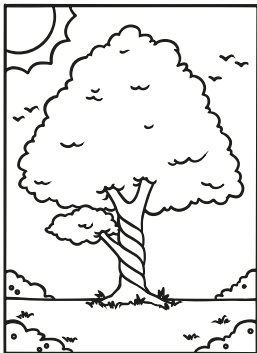
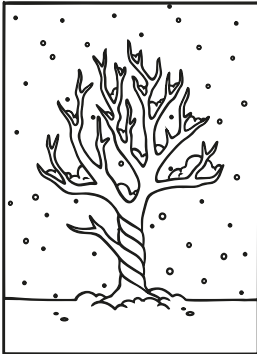
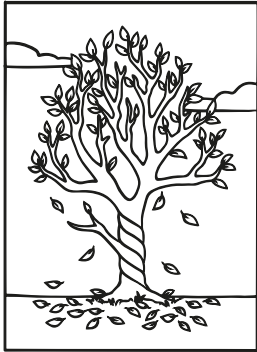
O SORVETE É GELADO.

CIRCLE ONLY THE HOT OBJECTS.
CIRCULE APENAS OS OBJETOS QUENTES.



MATCH THE PICTURE WITH THE CORRECT SEASON.

LIGUE A FIGURA À ESTAÇÃO CORRETA.



WINTER



SPRING



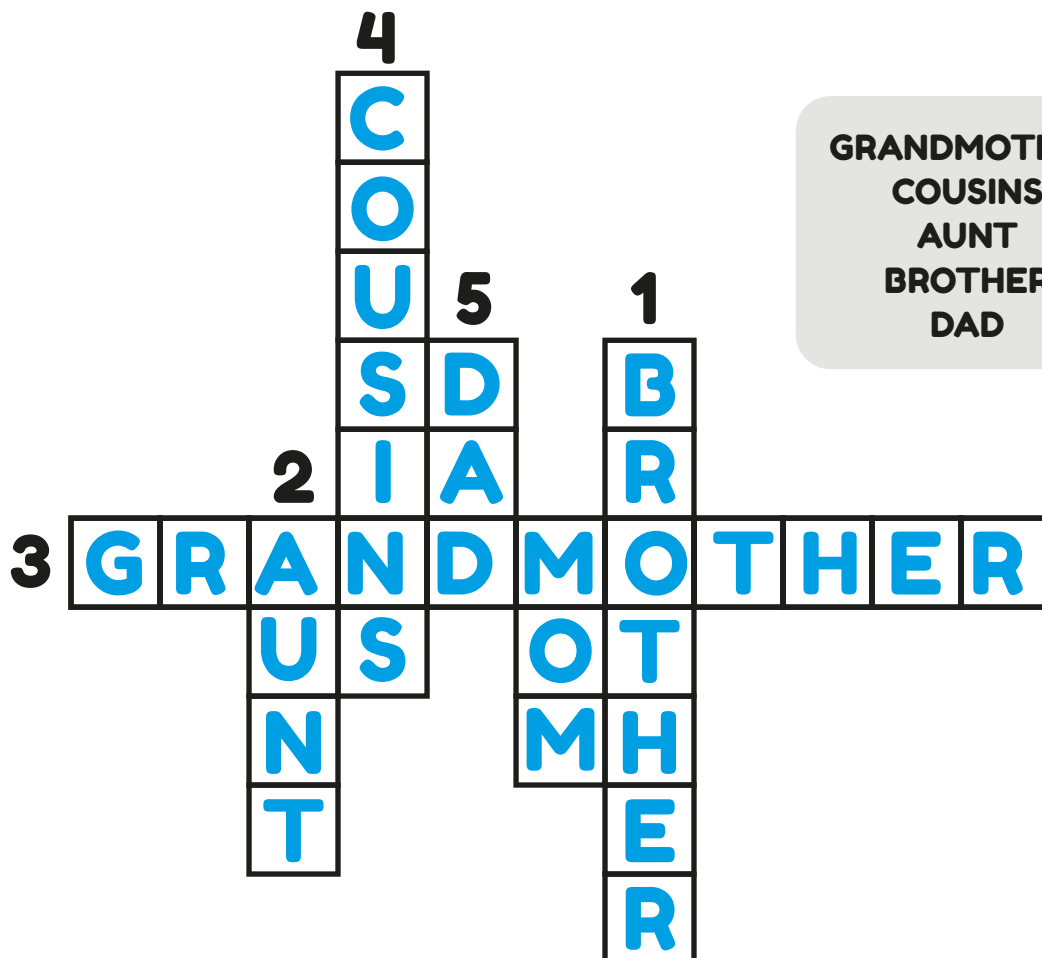
SUMMER



AUTUMN

FAMILY CROSSWORD

CRUZADINHA DE FAMÍLIA



GRANDMOTHER
COUSINS
AUNT
BROTHER
DAD

1) HE HAS THE SAME MOTHER AS YOU.
HE IS YOUR BROTHER
ELE TEM A MESMA MÃE QUE VOCÊ. ELE É SEU...

2) THE SISTER OF YOUR MOTHER IS YOUR AUNT
A IRMÃ DA SUA MÃE É SUA...

3) THE MOTHER OF YOUR FATHER IS YOUR GRANDMOTHER
A MÃE DO SEU PAI É SUA...

4) THE CHILDREN OF YOUR UNCLAS ARE YOUR COUSINS
OS FILHOS DOS SEUS TIOS SÃO SEUS...

5) HE IS SON OF YOUR GRANDFATHER, BUT HE ISN'T YOUR UNCLE.
HE IS YOUR DAD
ELE É FILHO DO SEU AVÔ, MAS NÃO É SEU TIO. ELE É...